



## Step Covers

Prevent costly slips and falls, especially on the leading edge of the stair, where most slips occur. Even in adverse conditions, when steps are wet, icy, or dirty, Safeguard Hi-Traction<sup>®</sup> and HiGlo-Traction<sup>®</sup> anti-slip step covers provide excellent footing, far exceeding OSHA standards. Our anti-slip step covers:

- Can be customized to ensure the right base material, grit, size, pass-through holes and colors are selected for your exact application
- Wrap the leading edge and cover the proper depth for foot traffic to eliminate slip and trip hazards
- Are fabricated to your specifications using a durable, non-load-bearing base of FRP fiberglass, galvanized or stainless steel

### Standard Safety Colors

Color and markings can be used to attract attention, designate caution, and communicate safety information in a variety of industrial and safety applications.



### Premium Colors

Provide architects, facilities managers, and homeowners with additional contemporary color choices for safety applications. These designer colors fit the aesthetic requirements for anti-slip protection at schools, commercial offices, institutional buildings, hotels, and personal residences.



### HiGlo-Traction<sup>®</sup>

In darkness or a power outage, these photoluminescent colors highlight the way.

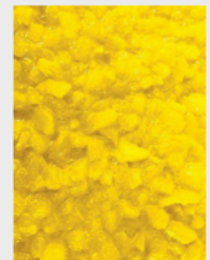


### Two-Tone Configurations

For added safety, two-tone step covers call attention to the leading edge of the step. A contrast between the step edge and the back of the tread below provides good definition and clear visibility for added awareness.



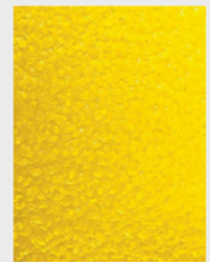
Super-coarse (Xtreme<sup>™</sup>) grade



Extra-coarse (offshore) grade



Coarse (Industrial) grade



Six Grit Options



## Walkway Covers

Convert any flat surface into a safe, non-slip working or walking area with Safeguard Hi-Traction<sup>®</sup> and HiGlo-Traction<sup>®</sup> walkway and ramp covers.

Protect your workers, customers, and business from the consequences of slip-and-fall hazards by placing walkway and ramp covers in any areas where these incidents could occur. Our anti-slip walkway and ramp covers are:

- Prefabricated retrofit covers that can be quickly and easily installed over existing surfaces, such as concrete, wood, metal plate, and grating, using mechanical fasteners or adhesive
- Available in a wide variety of shapes, sizes, and flexibility options
- Designed for every non-slip flooring need and visual preference

### Base Materials

- ½” pultruded fiberglass (FRP) is lightweight, impact-resistant, cost-effective, and available for weld-in installation
- 1 mm molded fiberglass (FRP) is a thin profile alternative with a peel-and-stick installation option
- Vinyl (flexible PVC) offers peel and stick installation
- Galvanized steel 18 gauge (1.2 mm) G90 corrosion-resistant
- Stainless steel 18 gauge (1.2 mm) #316 sanitary
- Heavy-duty aluminum – 18 gauge, 60-61 T marine grade is thick, rigid, and durable
- Roll Traction<sup>®</sup> is flexible and portable



### Grit Options

Our anti-slip walkway and ramp covers are available in a range of grit options, including:

- Super-coarse (Xtreme<sup>™</sup>)
- Extra-coarse (offshore)
- Coarse (industrial)
- Fine (commercial)
- Extra-fine (residential)
- Super-fine (barefoot)





## Ladder Rung Covers

Our Hi-Traction® ladder rung covers deliver firm-footed traction from top to bottom, significantly enhancing safety in one of the most dangerous spaces: the slick, small foot surface area on ladder rungs.

Safeguard's two styles of anti-slip ladder rung covers fit easily over the rung, delivering complete, long-lasting performance in the world's toughest indoor and outdoor environments. Our ladder rung covers:

- Come in channel-shaped and half-round styles
- Are made of FRP (fiberglass) and galvanized or stainless steel base
- Have adhesive, mechanical, or welded installation options
- Can be retrofitted in the field or specified as an OEM enhancement



### Product Specifications

Choose from one of the following base materials of construction, or provide your own material for direct gritting:

- Pultruded fiberglass (FRP) is lightweight, impact-resistant, and cost-effective
- Galvanized steel 18 gauge (1.2 mm) G90 corrosion resistant
- Stainless steel 18 gauge (1.2 mm) #316 sanitary
- Direct grit – send us your OEM parts or your engineered drawings for fabrication, then gritting

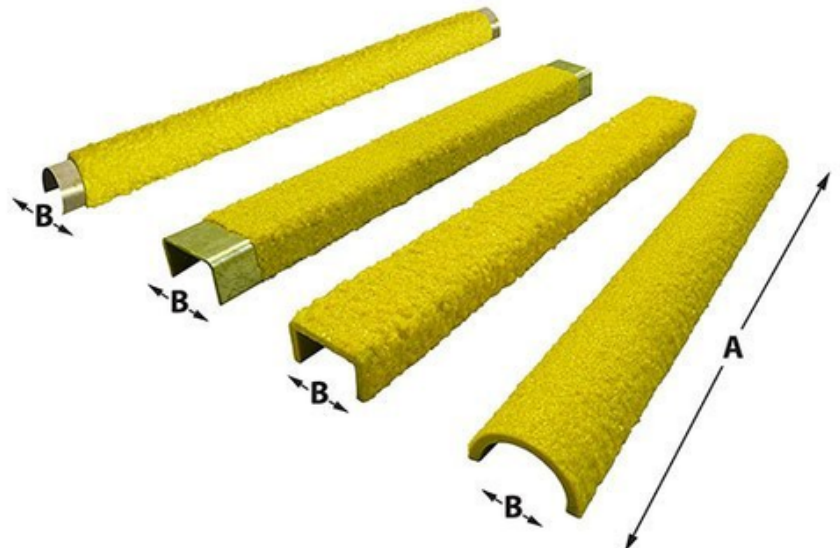
Choose from the following base material shapes:

- Channel
- Half-round
- Angle

### Grit Options

Our ladder rung covers are available in five different grades of grit. Fine grade (commercial) is the standard choice for most ladder applications. Options include:

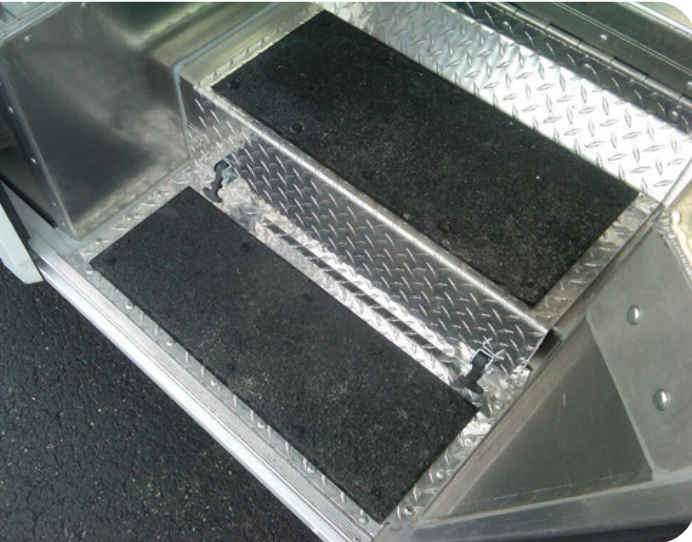
- Extra-coarse (offshore)
- Coarse (industrial)
- Fine (commercial)
- Extra-fine (residential)
- Super-fine (barefoot)





## Landing Covers

- Safeguard Hi-Traction® landing covers combine a larger flat area with a vertical lip to provide seamless anti-slip coverage on stair landings. Along with anti-slip step covers, attention must be paid to the open area and the leading edge of each landing.

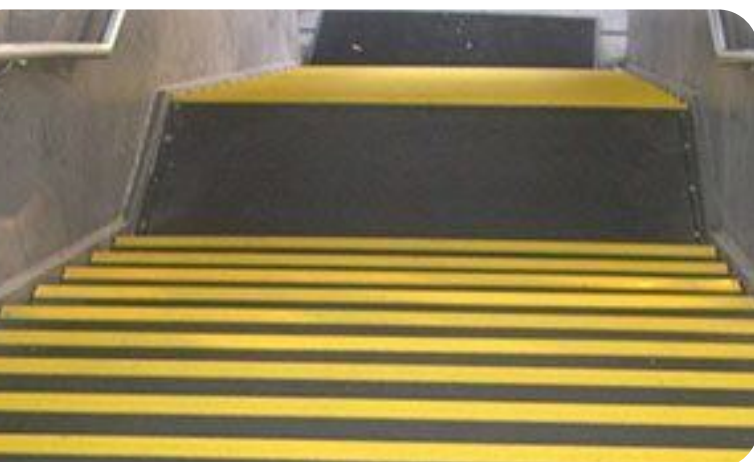
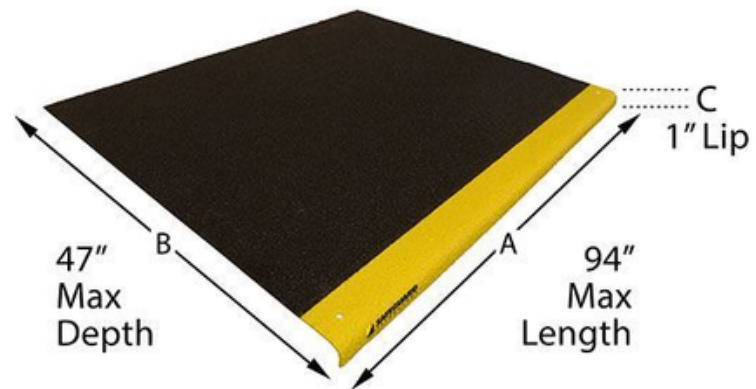


### Base Materials

- Choose from one of the following base materials of construction, or provide your own material for direct gritting:
- 1/8" fiberglass (FRP) is lightweight, impact-resistant, and cost-effective
- Galvanized steel 18 gauge (1.2 mm) G90 corrosion resistant
- Stainless steel 18 gauge (1.2 mm) #316 sanitary
- Heavy-duty aluminum, 60/61 T marine grade is thick, rigid, and durable

### Available Sizes

- Hi-Traction® and HiGlo-Traction® landing covers are designed to cover stair landings and wrap over the critical leading edge with a standard 1" vertical lip.
- 1/8" fiberglass (FRP) is available in a maximum length of 94" and a maximum depth of 47".
- Steel and heavy-duty aluminum options are also available.



### Grit Options

Our landing covers are available in a range of grit options, including:

- Super-coarse (Xtreme™)
- Extra-coarse (offshore)
- Coarse (industrial)
- Fine (commercial)
- Extra-fine (residential)
- Super-fine (barefoot)